

# KMnet Admin

ENTERPRISE DEVICE MANAGEMENT SOFTWARE



ADVANCED DEVICE MANAGEMENT  
SOFTWARE.

 **KYOCERA**

# FAST, SIMPLE NETWORK DEVICE MANAGEMENT.

## UNIFIED SOFTWARE TO MANAGE DEVICES AND NETWORKS

KMnet Admin is Kyocera's unified device management software that uses a web-based platform to give network administrators easy and uncomplicated control over every device in the organisation. Tasks that used to require multiple programs or walking to each device can now be accomplished in a single, fast, modern environment.

## KEY BENEFITS OF KMNET ADMIN

- Unified software for network device management
- Manages thousands of devices on multiple networks
- Web-based administrator and end-user access requiring no client PC installation
- Built using state-of-the-art technologies including AJAX and J2EE
- Powerful framework to incorporate new add-ons and add capabilities
- Print Job Manager allows flexible administration of all jobs
- Accounting Manager monitors what gets printed where, when and by whom
- Built-in fleet configuration, firmware upgrade, and reporting tools (KYOsupport required)



## MODERN & STREAMLINED ARCHITECTURE

**All-in-one software** Normally, network device management means having to use many different programs. KMnet Admin handles almost all administrative tasks in one application through a common interface.

**Modular, standards-based architecture** KMnet Admin is based on trusted, high-performance technologies including J2EE and AJAX. Its modular approach enables Kyocera to add additional capabilities and support for future devices quickly and easily.

**Streamlined web-based interface** gives administrators the power to manage devices from any location.

## TAKE CONTROL OF YOUR PRINTERS AND MFPS

**Advanced device discovery** quickly finds all network devices and instantly records them in KMnet Admin's built-in database.

**Automatic and manual grouping** simplifies device management by allowing administrators to organise printers automatically according to feature, status, or description — or arrange them manually any way they prefer.

**Device maps** allow administrators to record the location of devices so they can quickly find and troubleshoot problem devices.

**Batch and fleet configuration** simplify operations by allowing administrators to define settings once and then apply them to any number of devices.

**Scheduled and ad-hoc firmware updates** make it easy to keep all printers up-to-date and secure.

**Extensive support for third party devices** makes KMnet Admin the ideal tool for mixed environments.

## SOLVE POTENTIAL PROBLEMS BEFORE THEY AFFECT USERS

**Sophisticated alert and subscription management** ensures that every printer error and warning gets sent to the right people immediately.

**Supply and maintenance warnings** enable administrators to replenish supplies and place service calls before end-users are affected.

## LOWER COSTS AND LESS WASTE

**Authoritative job accounting** puts the organisation's administrators back in control of print-related costs, reduces waste and helps optimise device usage.

KMnet's Accounting Manager can create recurring reports that can be automatically distributed to stakeholders via email (KYOsupport required).

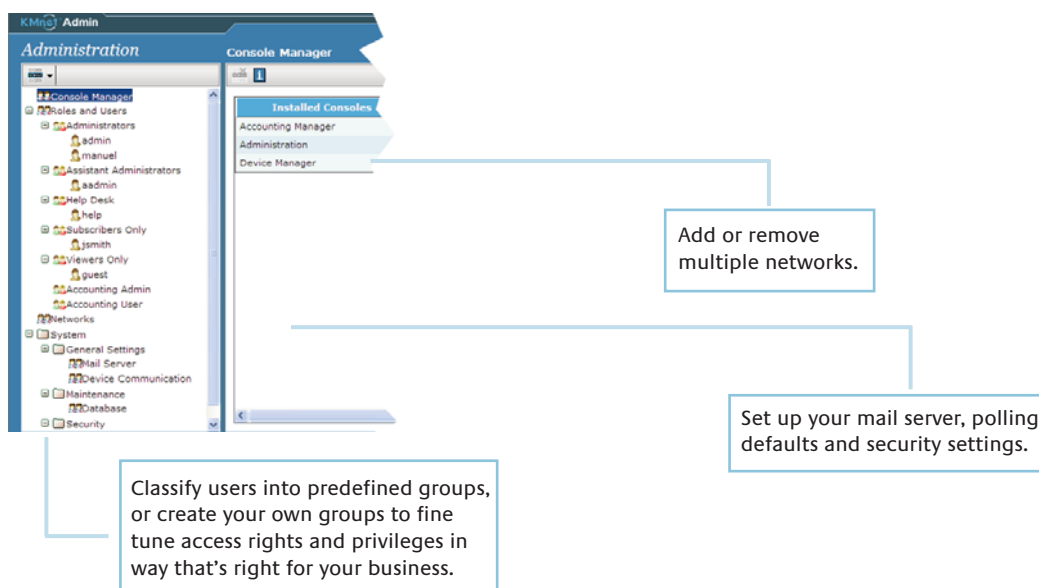
Accounting Manager can also be used to create departmental billing or charge-back solutions for documents sent to networked printers, or multi-function devices (KYOsupport required).

**Easy-to-use reporting tools** in each console show exactly how printers are used with just a few mouse clicks. This information can be used to optimise printing environments and accurately project future needs (KYOsupport required).

## KEY BENEFITS OF THE INTERFACE

The Administration console lets you manage users, networks, alerts and reports in a simple and intuitive way.

Administration Console



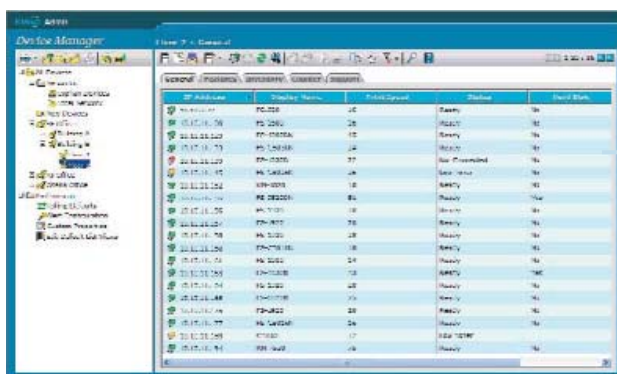
# UNIFIED SOFTWARE FOR UNIFIED EASY CONTROL.

Manage printing environments with a single product for device management, print queue management and accounting.

## DEVICE MANAGER

The Device Manager console allows you to organise your printers in any number of groups and subgroups. In a few simple steps you can update the firmware of one device, or one thousand. Printers can be found by any property and intuitive icons show you the status of every device in real time. Advanced alert management and support for SNMP traps make sure that every printer error and warning gets communicated to the right person immediately.

Device Manager Console



Instant status filters let you find printers that need attention with one click.

The Device Manager console lets you manage thousands of printers and MFP's, in your office or around the world, right from your desktop.

- No Status Filter
- Ready
- Warning
- Critical
- Not Connected
- Any Alerts
- Printing
- Upgrading

# PRINT JOB MANAGER

The Print Job Manager console lets you install and manage print queues from your desktop. It provides effective server-side control of print usage, lets administrators install and configure print queues on Windows 2000, Windows 2003 and Windows XP print servers, monitor their use, control and reassign print jobs, and set device and user policies directly in KMnet Admin.

Print Job Manager Console



Print jobs are encrypted on the print server for security and privacy.



Job release feature offers confidential pin access printing.

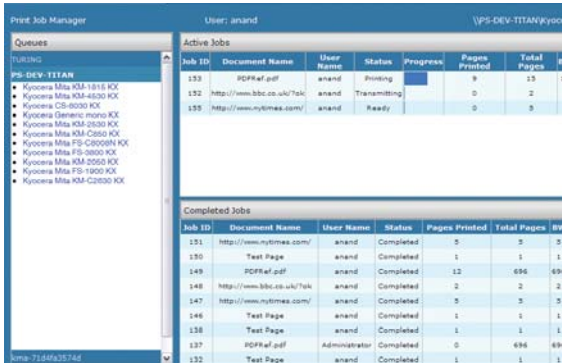
Full Active Directory support lets users log on with their Windows password.

Cancel, reorder, or pause active print jobs in real time.

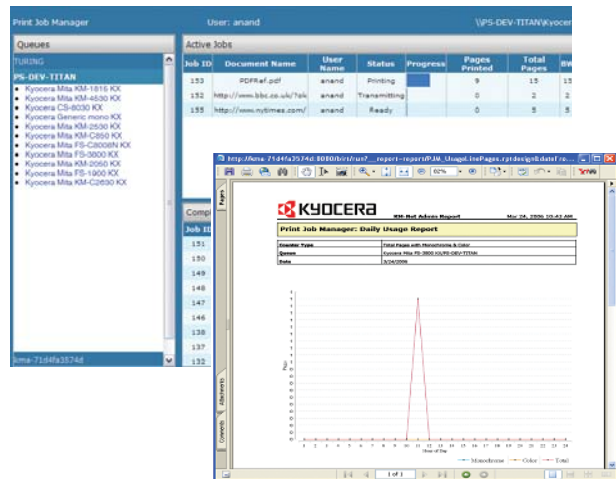
## KEY BENEFITS OF PRINT JOB MANAGER

- Centralised, web-based administration of print queues and users
- Live display of print queues, current users, and their usage counters
- Detailed usage and ranking reports (KYOsupport required)

Print Job Manager Console



User Administration



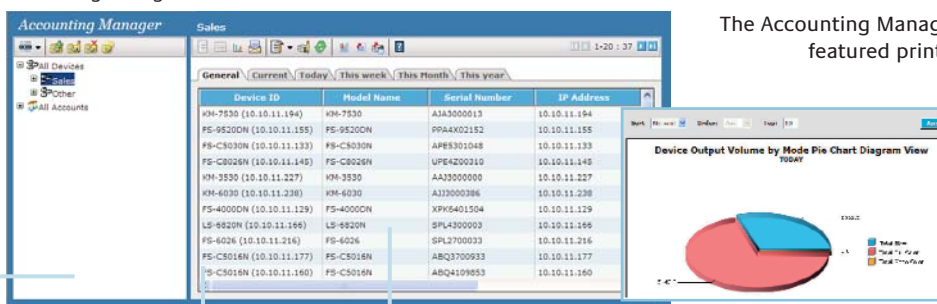
Sample Report (KYOsupport required)

## PRINT ACCOUNTING

The Accounting Manager console offers advanced, fully featured print accounting for your network directly from KMnet Admin.

You can create comprehensive usage reports and rankings with the report wizard. KMnet Admin's extensive reporting features lets you analyse and optimise your printing environment and project future purchases (KYOsupport required).

Accounting Manager Console



The Accounting Manager console brings advanced, fully featured print accounting to your organisation

KMnets Admin report.

Set up accounts and account groups by devices or users.

Block access for unauthorised users and set daily, weekly, or monthly print limit for authorised users.

View current and historical print totals.

Device ID	Model Name	Serial Number	IP Address
KM-7530 (10.10.11.194)	KM-7530	A3A3000013	10.10.11.194
FS-95200N (10.10.11.155)	FS-95200N	PPA4X002152	10.10.11.155
FS-C8030N (10.10.11.133)	FS-C8030N	APES301048	10.10.11.133
FS-C8026N (10.10.11.145)	FS-C8026N	UF64Z000310	10.10.11.145
KM-3530 (10.10.11.227)	KM-3530	AA330000000	10.10.11.227
KM-6030 (10.10.11.238)	KM-6030	A1330000386	10.10.11.238
FS-40000N (10.10.11.129)	FS-40000N	XPV5401504	10.10.11.129
LS-5820N (10.10.11.166)	LS-5820N	SPL43000003	10.10.11.166
FS-6026 (10.10.11.216)	FS-6026	SPL37000033	10.10.11.216
FS-C5016N (10.10.11.177)	FS-C5016N	ABQ37000933	10.10.11.177
FS-C5016N (10.10.11.160)	FS-C5016N	ABQ4109853	10.10.11.160

Device Output Volume by Mode Pie Chart Diagram View TODAY

Legend: Total Print, Total Copy, Total Print+Copy

## KEY BENEFITS OF ACCOUNTING MANAGER

- Web-based management of device and user accounts
- Consolidated information for devices, accounts and counter data
- Export to CSV
- Reports are available in a PDF or HTML format
- Full integration with KMnet Admin provides a unified software for network device management
- Detailed point-and-click tabular, graphical and combined reports (KYOsupport required)
- Detailed usage and ranking reports (KYOsupport required)

# KMnet Admin

## ENTERPRISE DEVICE MANAGEMENT SOFTWARE

### TECHNICAL REQUIREMENTS

#### Server Requirements

Microsoft Windows® 2000, Microsoft Windows® 2000 Server, Microsoft Windows® Server 2003, Java™ JDK 1.4.2 or higher

Small to Medium Networks: 1GB RAM (2GB RAM recommended), 500MB hard disk space for installation and device database Enterprise Networks: 2GB RAM (4GB RAM recommended), 2GB hard disk space for installation and device database

#### Client Operating System Requirements

Microsoft Windows® 95/98/ME, Microsoft Windows® 2000, Microsoft Windows® XP Professional, Microsoft Windows® Server 2003, Microsoft Vista®

#### Client Browser Requirements

Microsoft Internet Explorer 6 and above

#### Supported Devices

Kyocera network devices, and most third party network devices that support the standard printer MIB

### ACCOUNT REPORTING

#### Supported Counters

Page counts, depending on device model: total, colour total, monochrome total, colour printed, monochrome printed, colour copied, monochrome copied, printed total, copied total, scanned total, faxed total, scan-to-fax, scan-to-copier, scan-to-network, A3, A4, A5, A6, B4, B5, B6, Legal, Letter, Ledger, Statement, Folio, Hagaki

#### Device Usage Reports (KYOsupport required)

Report Types: Scan volume, output volume, output mode, volume per paper size, volume per model, counter per device, rankings, top ten  
Report Periods: Daily, weekly, monthly

#### Account Usage Reports (KYOsupport required)

Output volume by function and mode, output volume per paper size, counter per account, rankings, top accounts, top devices

#### Available Chart Types (KYOsupport required)

Line, pie, bar, stacked bar, line with table, pie with table, bar with table, stacked bar with table

### ACCOUNT DEVICE MANAGEMENT

#### Account Operations

Create and delete accounts, create and delete device and account groups, group devices and accounts, set account limits by device or account, monitor account lock status, set account counter renewal periods, manage device account settings (access, restriction, security)

#### Email Notifications

Regressive account counter value, regressive device counter value, account cleared, device accounts cleared, device inactive for 1 month, device recommended monthly volume exceeded, device recommended monthly volume 90% used, account inactive for 1 month, account balance exhausted, account balance 90% exhausted, unauthorised balance change, scheduled report created

#### Print Notifications

Account balance exhausted, unauthorised access

#### Device Settings

Polling periods, accounting control, administrator password, accounting mode, security mode, cancel on account error, cancel on balance error, balance pattern, anonymous access, renewal period, setting access limits to devices

### ADMINISTRATION FUNCTIONS

#### Queue Creation

One-click conversion of existing print queues to managed queues, creation of managed queues by host name or IP address

#### Queue Management

Live display of queues and users with their current usage counters; add and remove device and user groups; reset usage counters for devices, users, and groups; generate usage and ranking reports; cancel, pause, resume, and reorder jobs; reprint a completed job; hold and release print jobs; confidential printing

#### Reporting (KYOsupport required)

Full complement of usage reports and rankings  
Report Types: Total pages, monochrome pages, colour pages, job counts, print data size — all by user, device, or group  
Report Periods: Date, date range, week, month  
Export Formats: HTML

#### Host Agent Functions

Start and stop service, specify port, configure queue management, setup server address, enable and disable job reprints, set completed job hold time in days

### USER FUNCTIONS

#### Job Views

Real time display of jobs in print queue including owner name, computer, IP address, job status, document title, total pages, monochrome pages, colour pages, pages printed, and progress information

#### Queue Operations

Users can cancel, pause, resume, reorder, and reprint jobs they own

Your Kyocera Business Partner:



pureprint®

CarbonNeutral® company

